

DRAWING NUMBER
49/113

DRAWING NUMBER

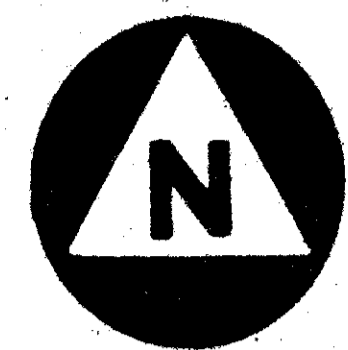
DRAWING NUMBER

DRAWING NUMBER

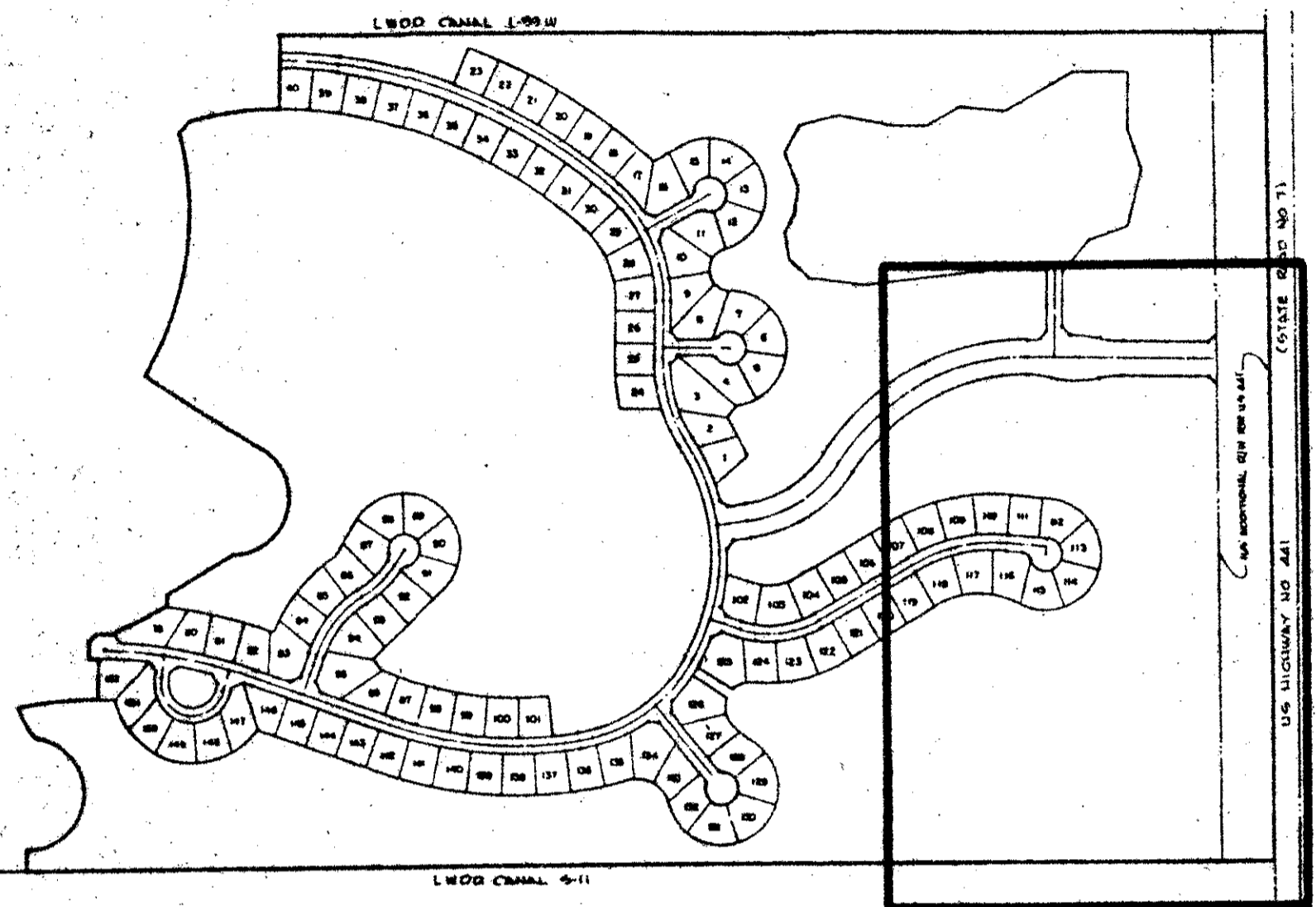
A part of SOUTHERN MANOR P.U.D. STONEBRIDGE PLAT NO. 1 (a planned unit development)

Lying in the South One-Half (S.1/2) of Block 69, Palm Beach Farms Company, Plat No. 3, Plat Book 2, Pages 45-54 (Inclusive),
Section 36, Township 46 South, Range 41 East, Palm Beach County, Florida
June, 1964
Sheet 2 of 8

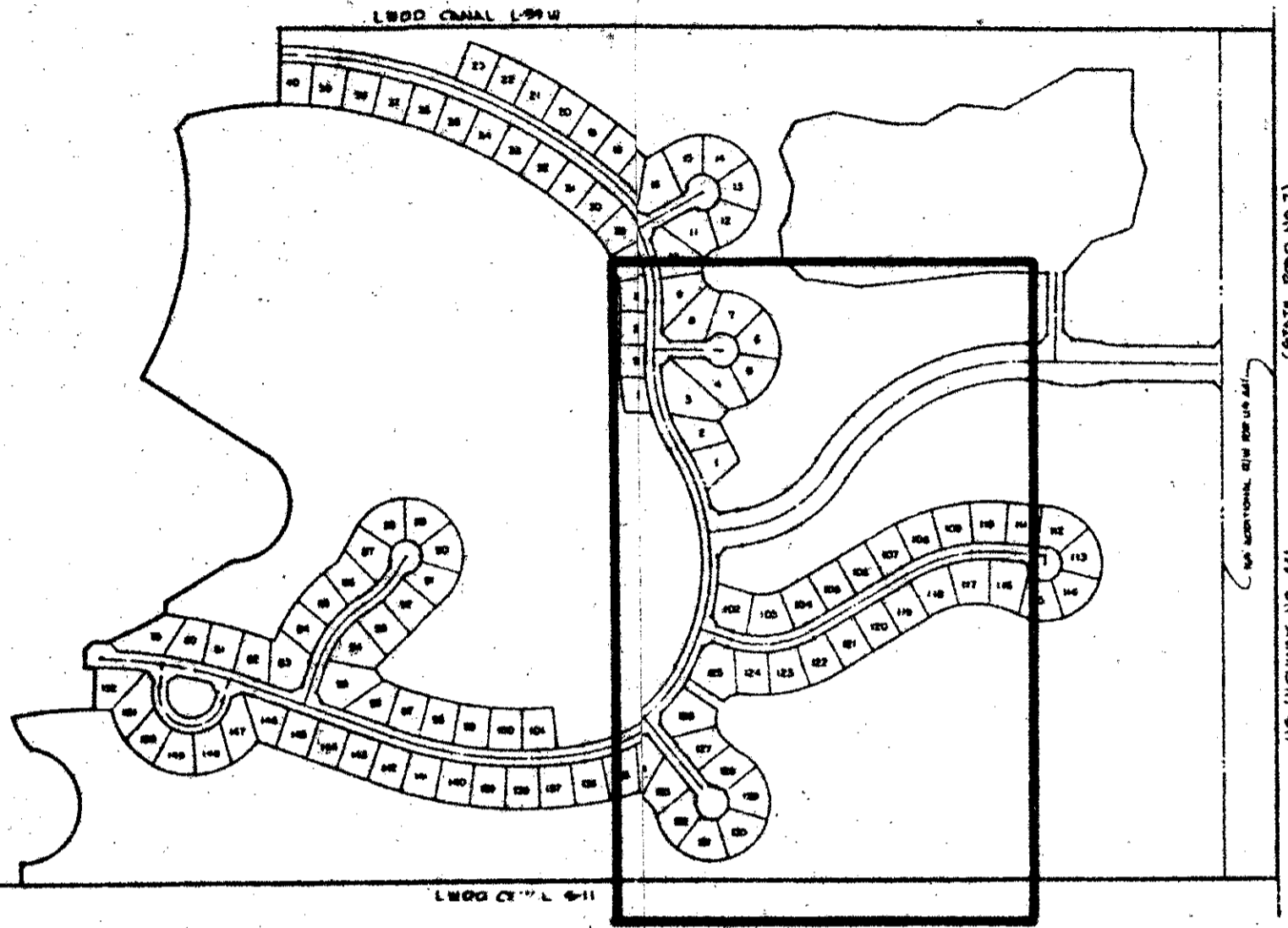
49/113



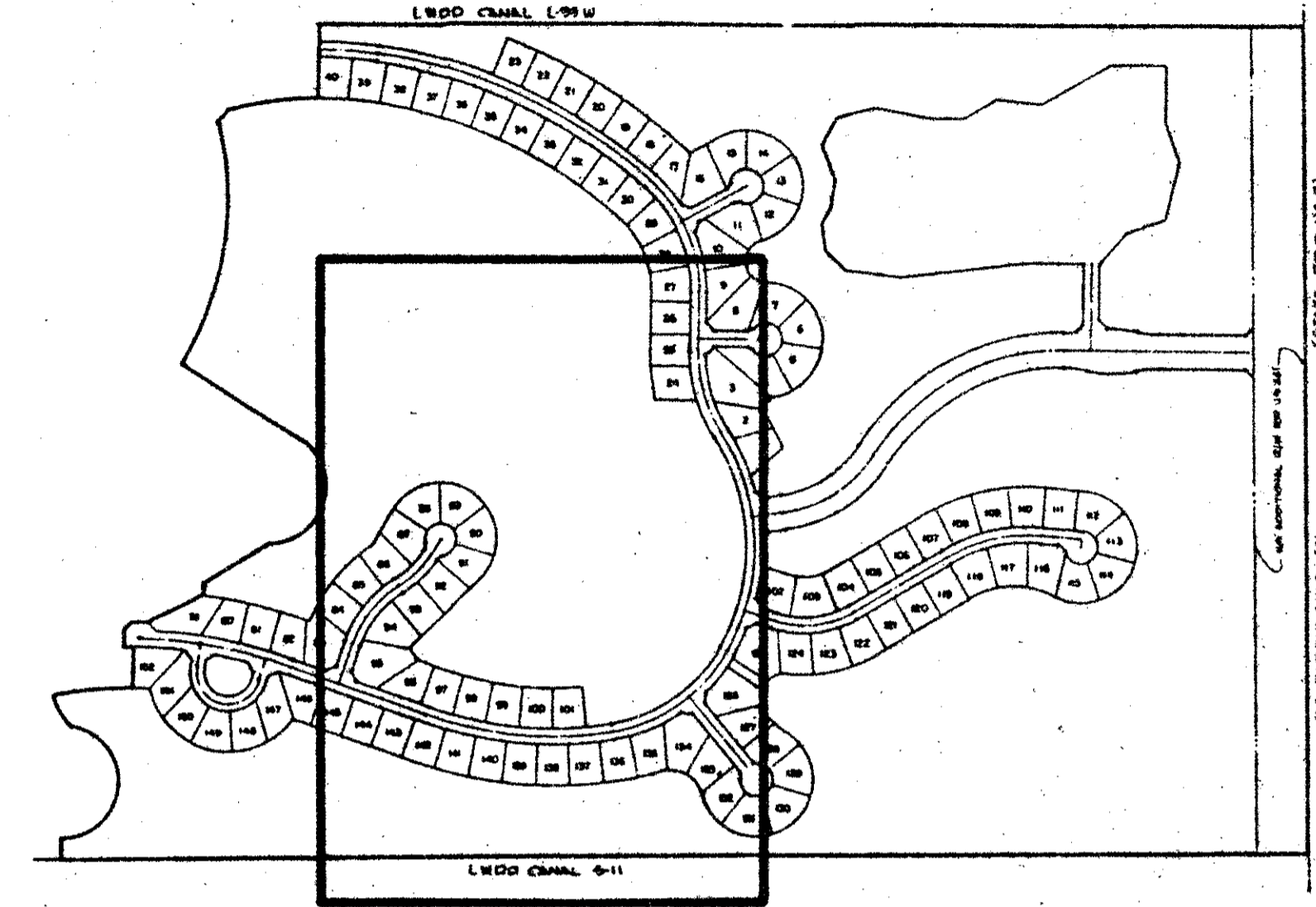
STATE OF FLORIDA
COUNTY OF PALM BEACH
THIS PLAT WAS FILED FOR
RECORD AT _____ DAY OF
THIS _____ A.D., 1964
AND DULY RECORDED IN PLAT
BOOK _____ ON PAGES _____
AND _____
JOHN B. DUNKLE, CLERK
CIRCUIT COURT
BY: _____ DC



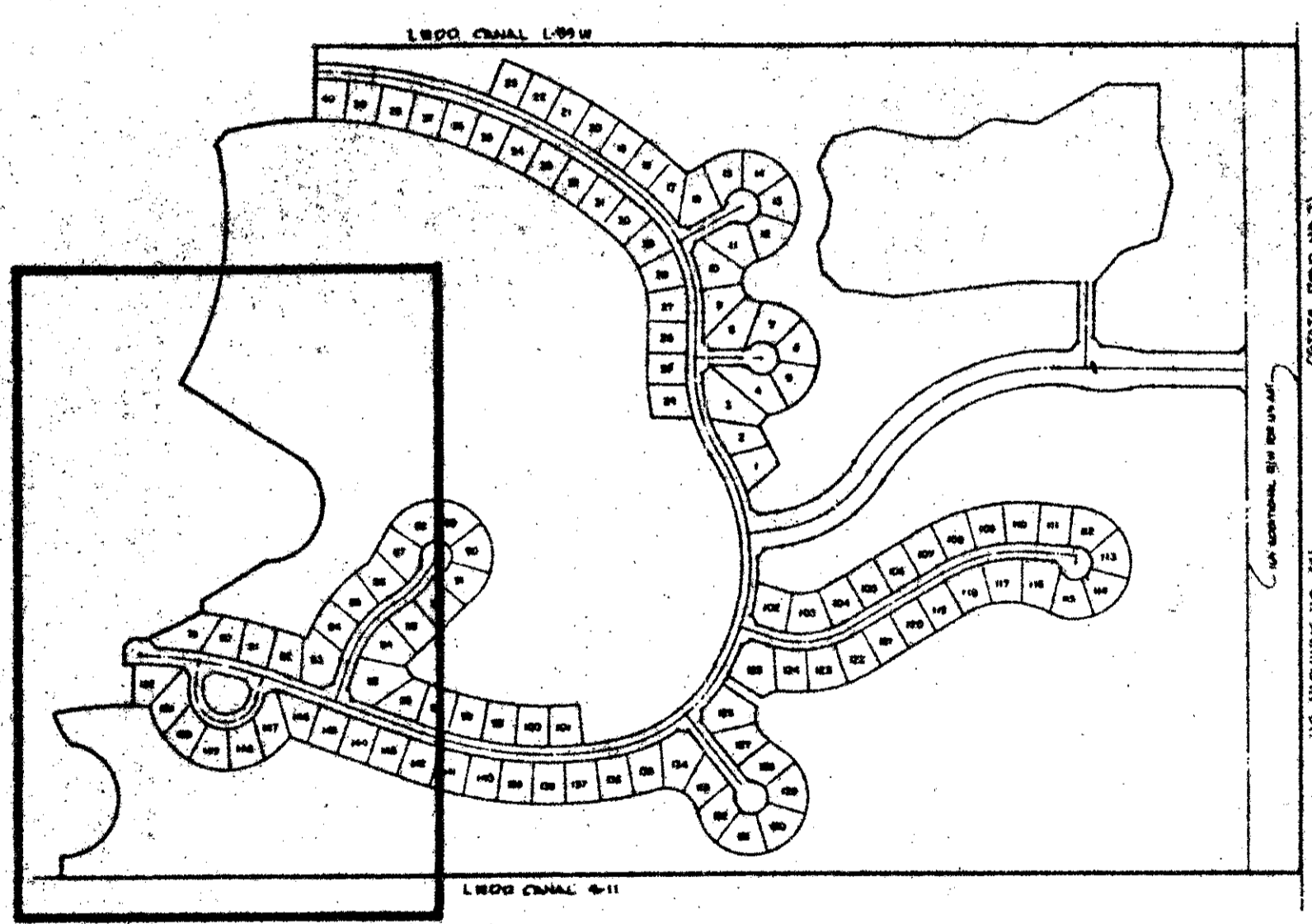
Sheet 3 of 8



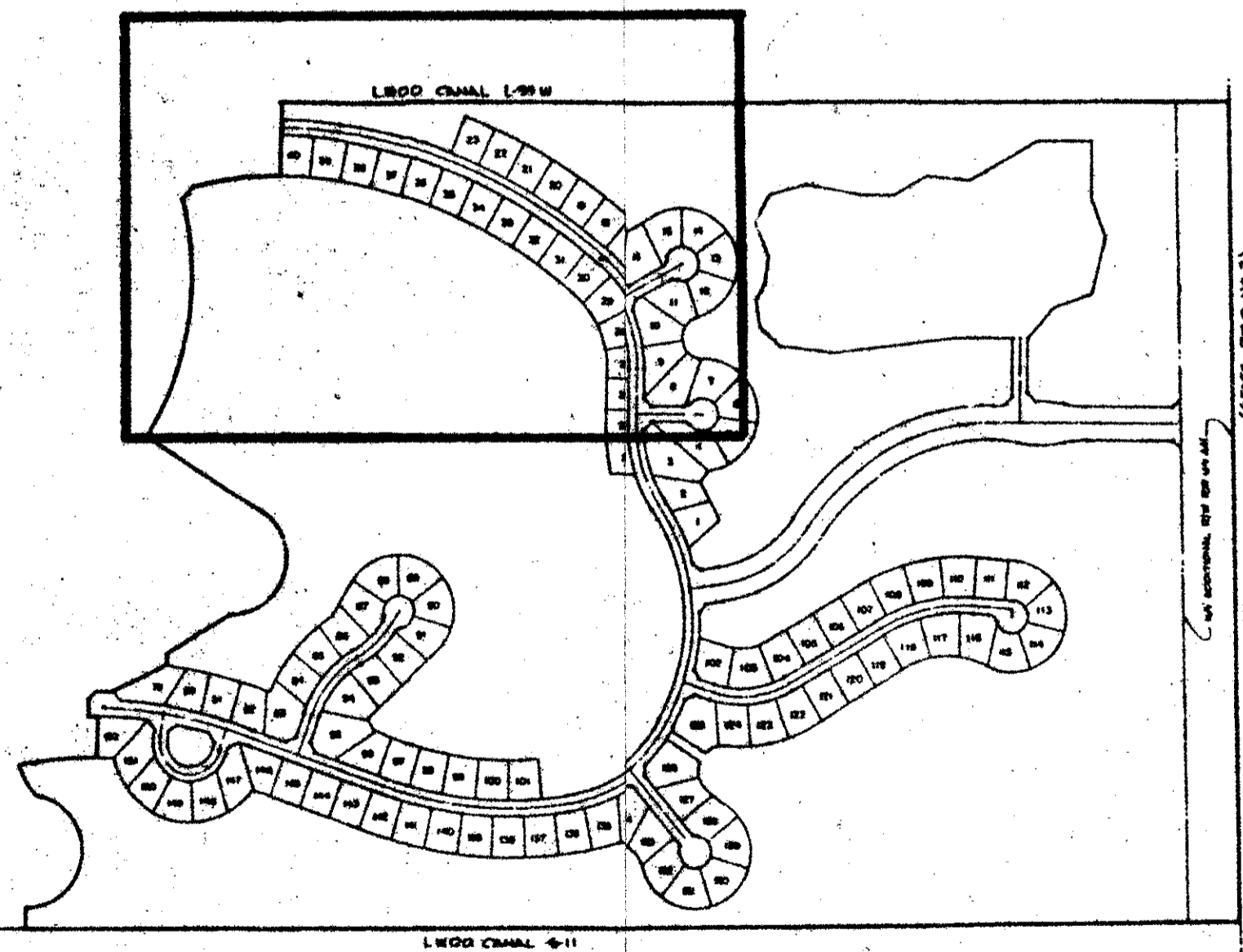
Sheet 4 of 8



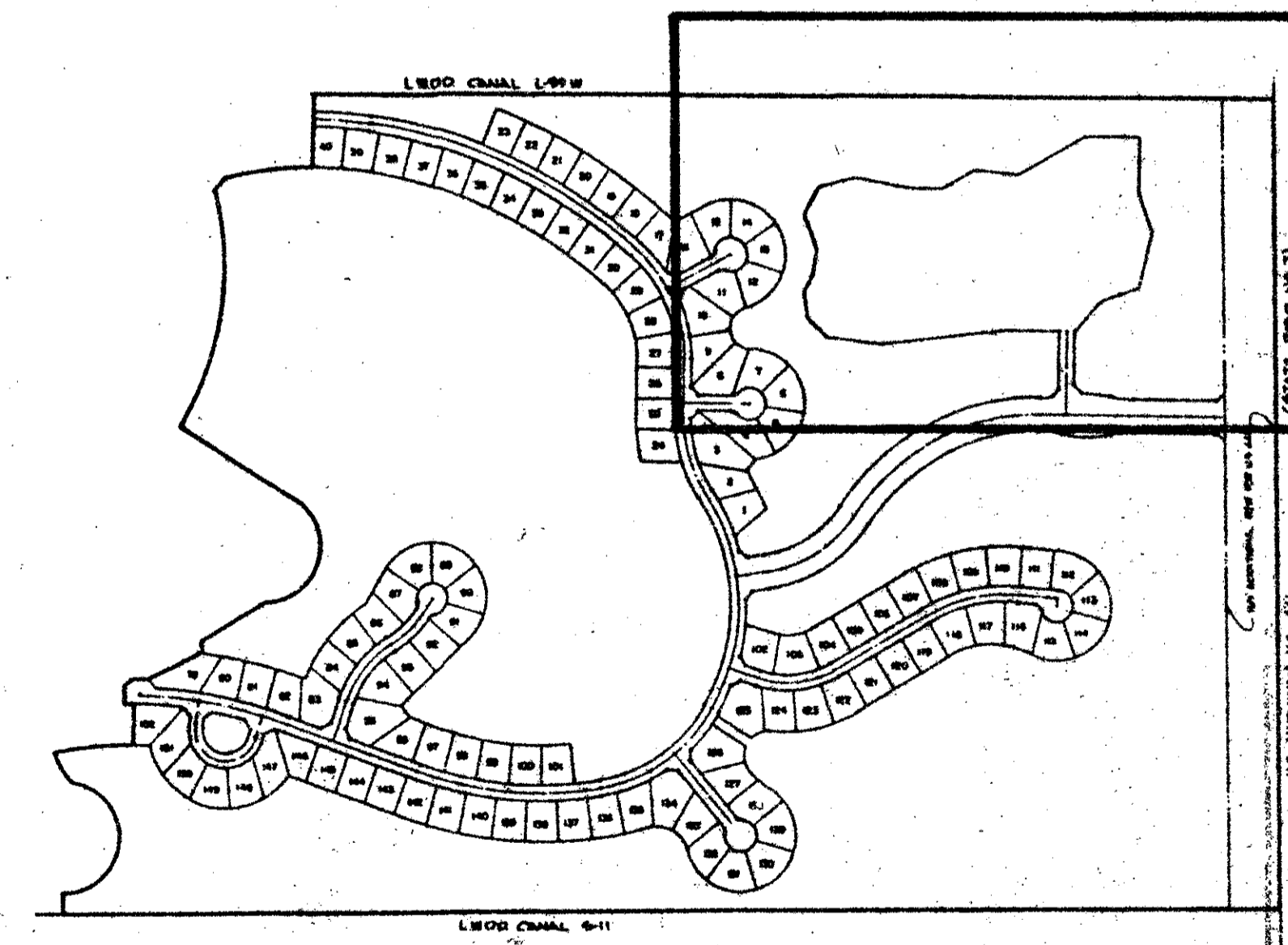
Sheet 5 of 8



Sheet 6 of 8



Sheet 7 of 8



Sheet 8 of 8

Ref. 83-107
p.d.

2014/41

BOOK 49 PAGE 113
FLOOD ZONE B FLOOD MAP 1008
ZONING AR
PUD NAME SOUTHERN MANOR

0420-001

49/113

EASEMENT PAPERS ATTACHED

CONRAD SCHAEFER CONSULTING ENGINEERS, INC.
PALM BEACH COUNTY, FLORIDA

A part of SOUTHERN MANOR P.U.D.
STONEBRIDGE PLAT NO. 1
(a planned unit development)
RECORD PLAT

DATE	BY	SCALE	NO. OF SHEETS
1964	E. DECAR	AS SHOWN	8
1964	P. PALCO	AS SHOWN	8

